



Quebec, 37 Irsha St

Appledore, Bideford, Devon EX39 1RZ

Guide Price: £525,000

HARDING & CO
ESTATE AGENTS & VALUERS

PRIME WATERSIDE LOCATION

Located on the estuary side of Irsha Street in Appledore, this delightful mid-terrace house offers a unique opportunity for both holiday letting and residential living. Built in 1850, this property exudes character and charm, boasting a generous 1,130 square feet of living space spread across three well-appointed stories.

This home, which was fully renovated less than 6 years ago features three spacious double bedrooms, including one with a convenient en-suite and separate bathroom, a lovely kitchen breakfast room and an open-plan lounge/diner that opens to the garden and the river beyond. The property's prime location allows for breathtaking views over the estuary towards Crow Point and Instow.

This property has a proven track record as a successful holiday let, making it an attractive investment opportunity. However, it also holds great potential as a lovely residential home for those seeking a tranquil lifestyle by the water.

NO CHAIN

Appledore is a quaint port and ship building village with the most picturesque quayside and narrow cobbled streets providing amenities including mini-Supermarket, Post Office, Primary School, Library, places of worship, a selection of Galleries and Craft Shops together with many Pubs and Restaurants. Nearby is Northam Burrows Country Park offering many attractive walks and stunning vistas, and Westward Ho!, with its long sandy beaches and Golf Course. A regular bus service provides access to the port and market town of Bideford is approximately 3 miles distant.

Outside: The garden to the rear of the property comprises of a paved patio area which directly overlooks the Estuary.

Tenure: Freehold

Services: All main services connected

Energy Performance Certificate: D

Council Tax Banding: B

Directions:

From Appledore Quay with the river on your right follow the road along into the main car park in front of the church. It is recommended that you park here and proceed on foot to the far side of the car park which leads directly into Irsha Street where the property will be found after a short distance on the right-hand side just after the Royal George Pub.





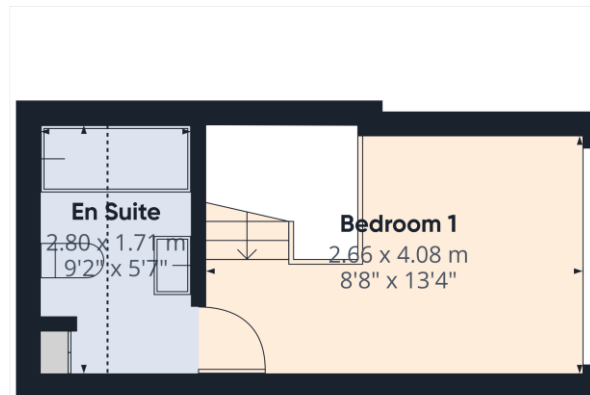
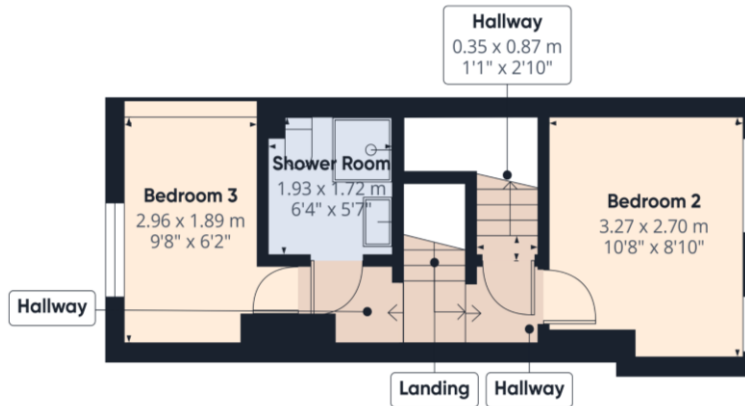
Invicta House, The Pill, Kingsley Road,
Bideford, Devon EX39 2PF

t: 01237 476544

f: 01237 422722

e: bideford@hardingresidential.com

www.hardingresidential.com



Scan Me to Watch This
Property's Virtual Tour



